

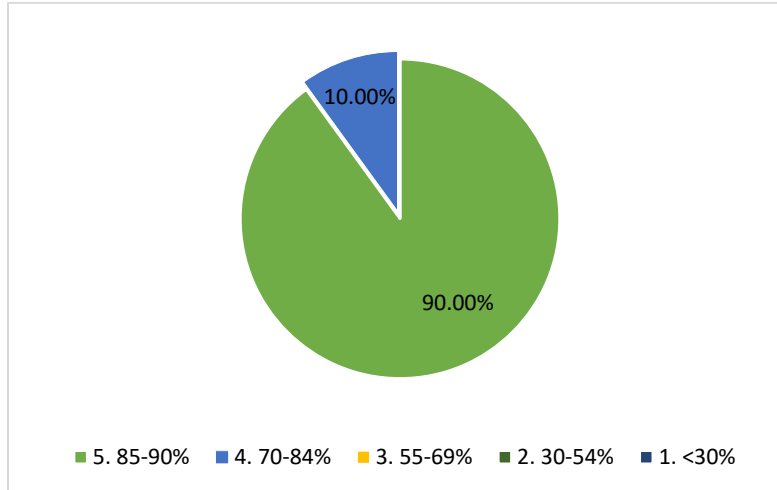
Student's Survey on teaching learning process

Department: Anthropology

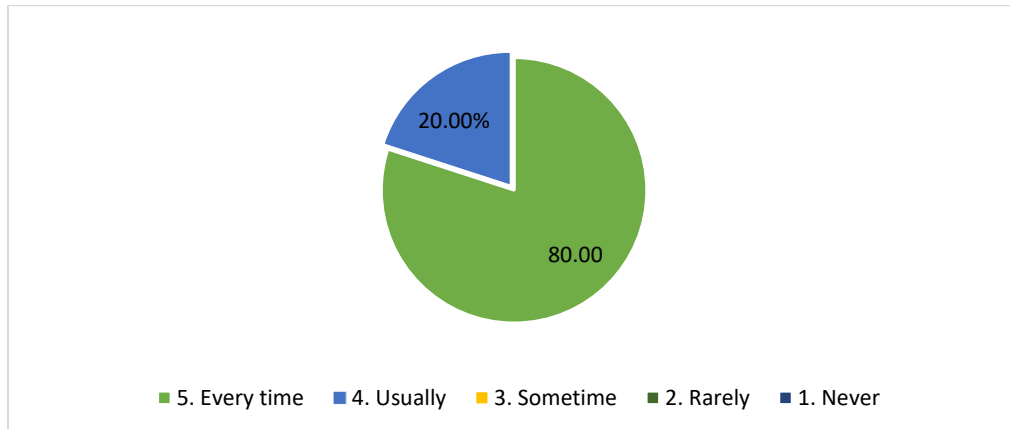
Semester: II

Total responses: 06

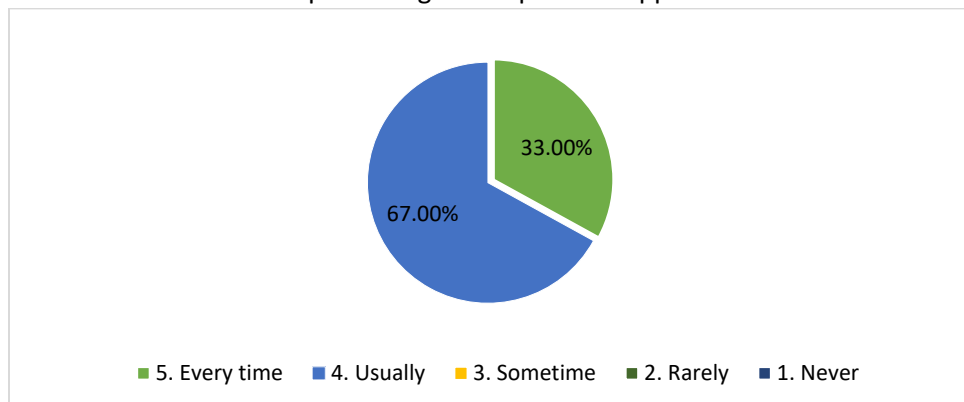
1. How much of the syllabus was covered in the class?



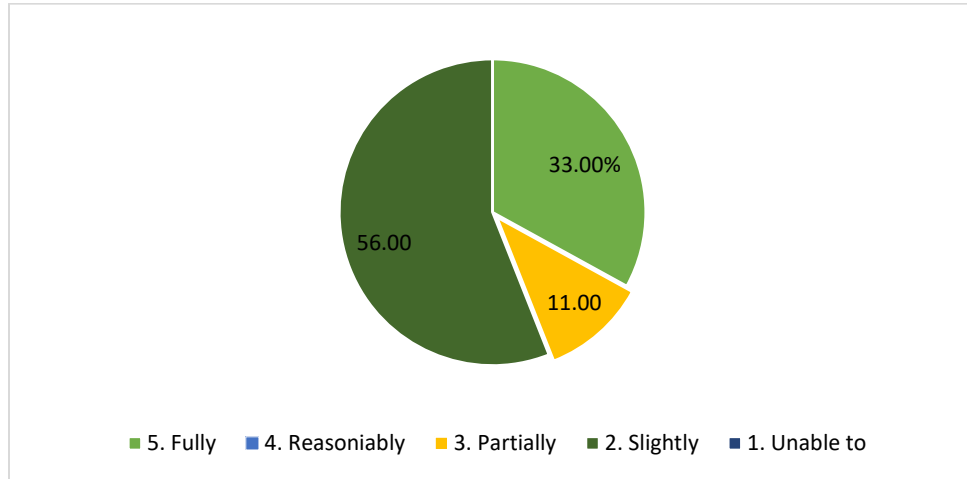
2. Teachers inform you about your expected competencies, course outcomes and programme outcomes.



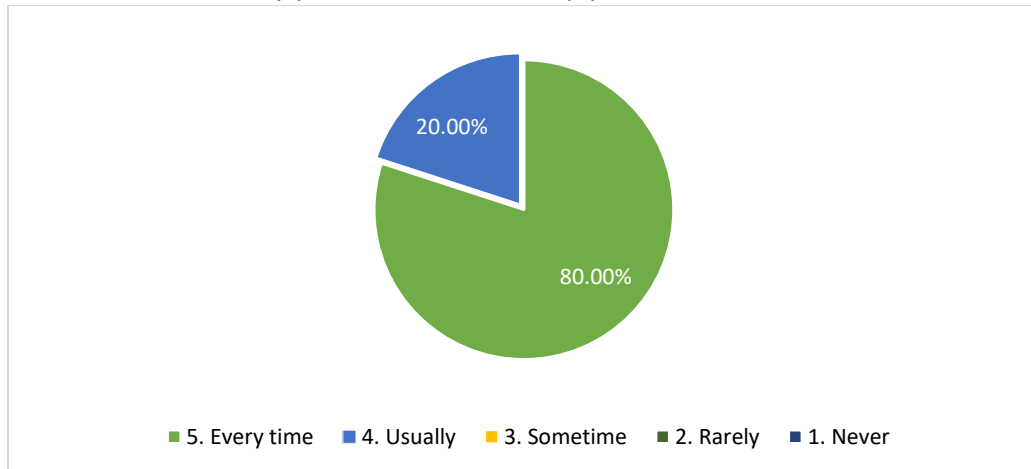
3. The teachers illustrate the concepts through examples and applications.



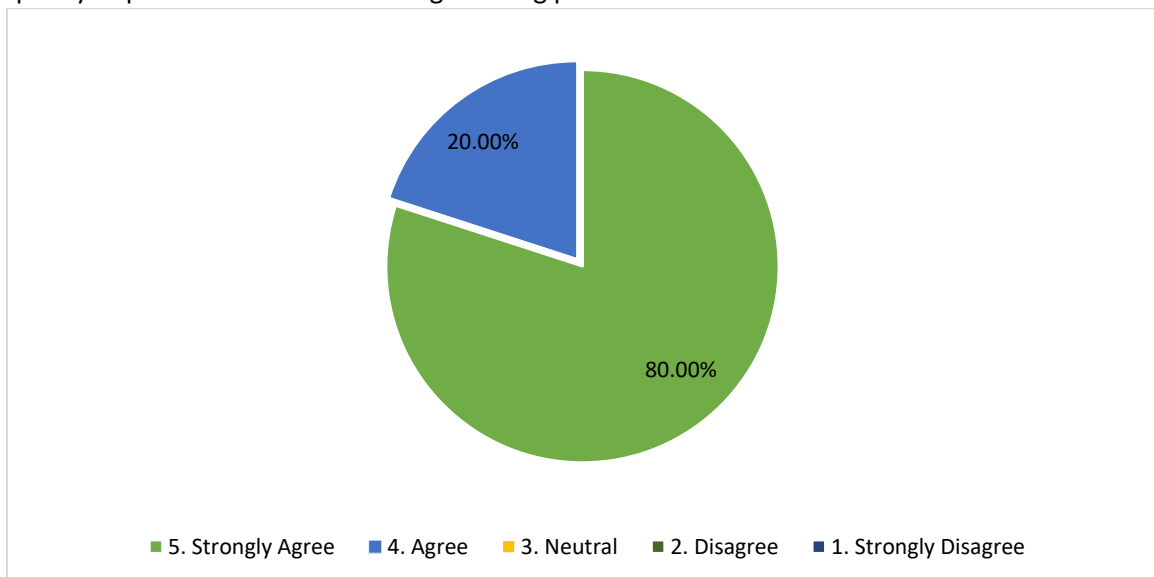
4. The teachers identify your strengths and encourage you with providing right level of challenges



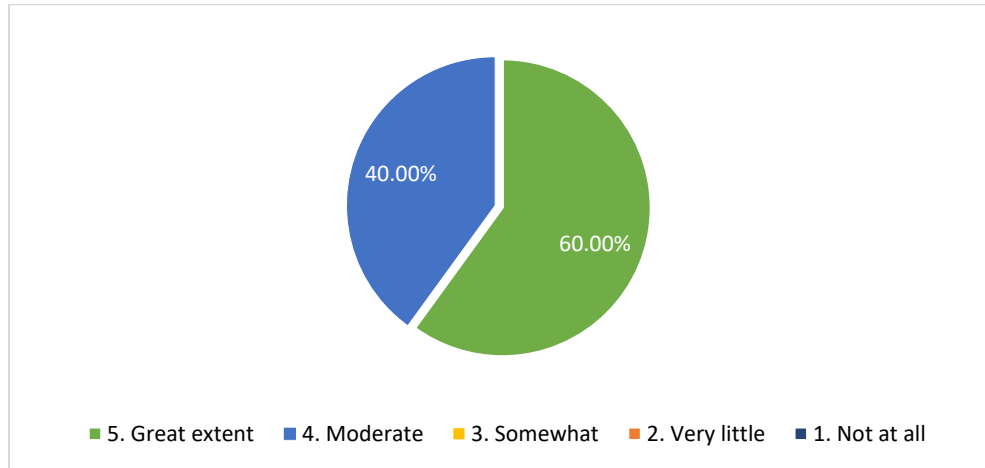
5. Teachers are able to identify your weakness and help you to overcome them.



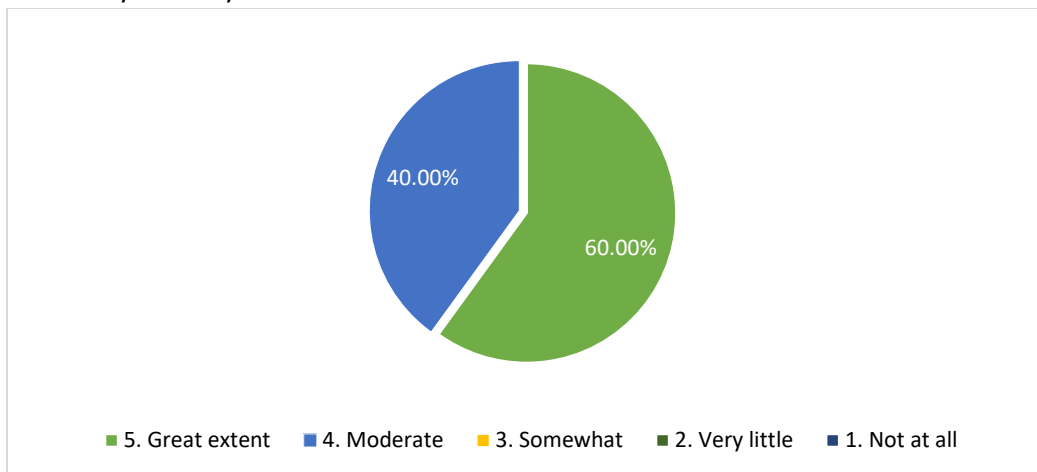
6. The institution makes effort to encourage students in the monitoring, review and continuous quality improvement of the teaching learning process.



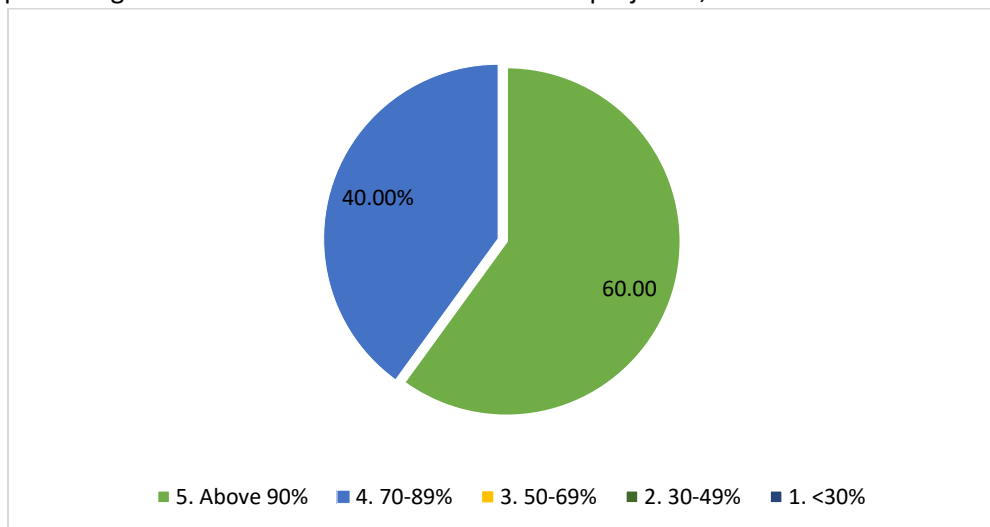
7. The institute/teachers use student centric methods, such as experiential learning, participative learning and problem solving methodologies for enhancing learning experience.



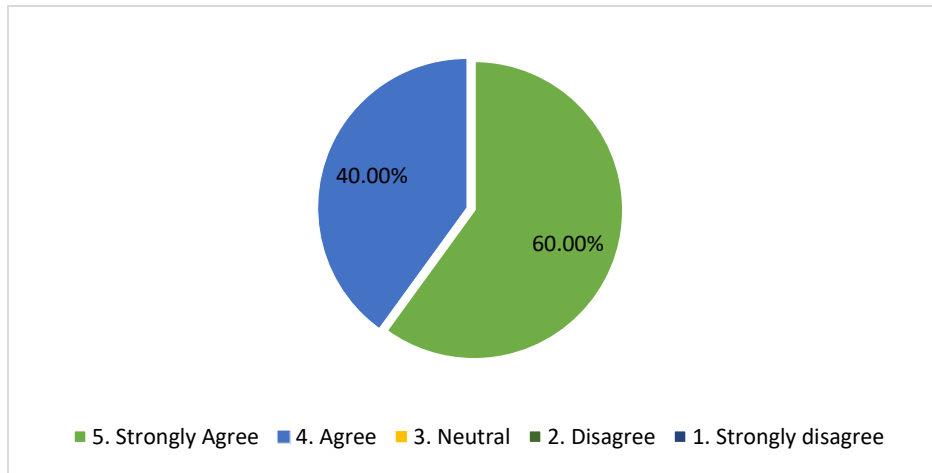
8. Efforts are made by the institutions/ teachers to inculcate soft skills, life skills and employability skills to make you ready for the world of work.



9. What percentage of teachers use ICT tools such as LCD projector, Multimedia etc while teaching.



10. The overall quality of teaching learning process in your institute is very good.



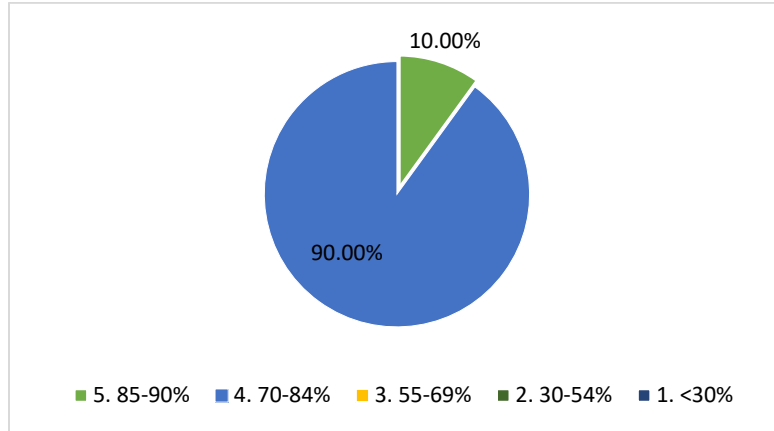
Student's Survey on teaching learning process

Department: Anthropology

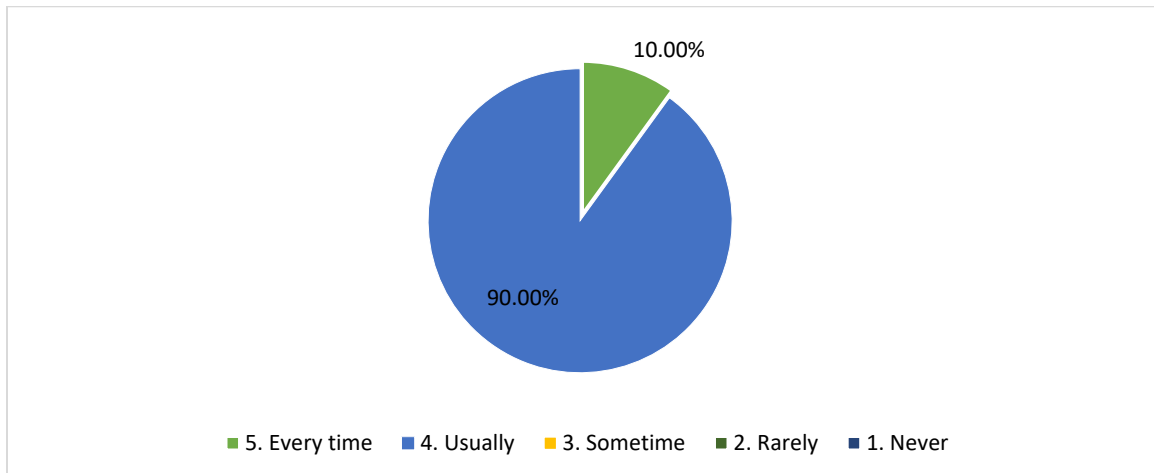
Semester: IV

Total responses: 09

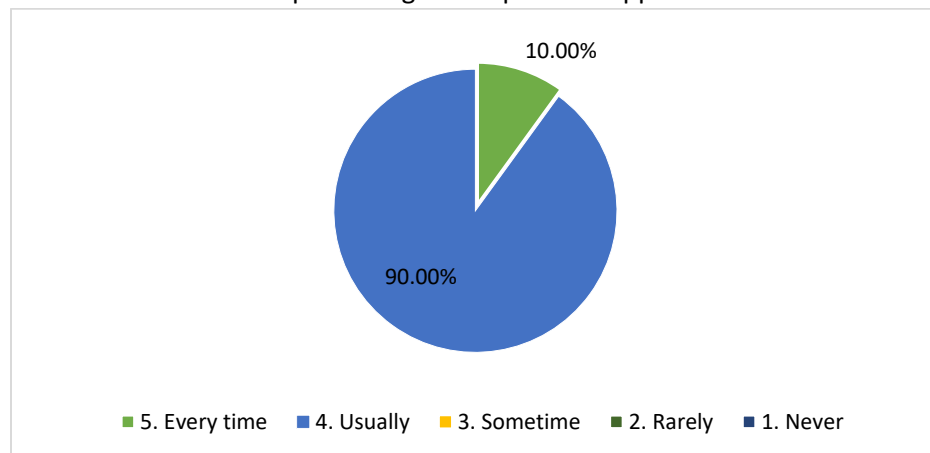
1. How much of the syllabus was covered in the class?



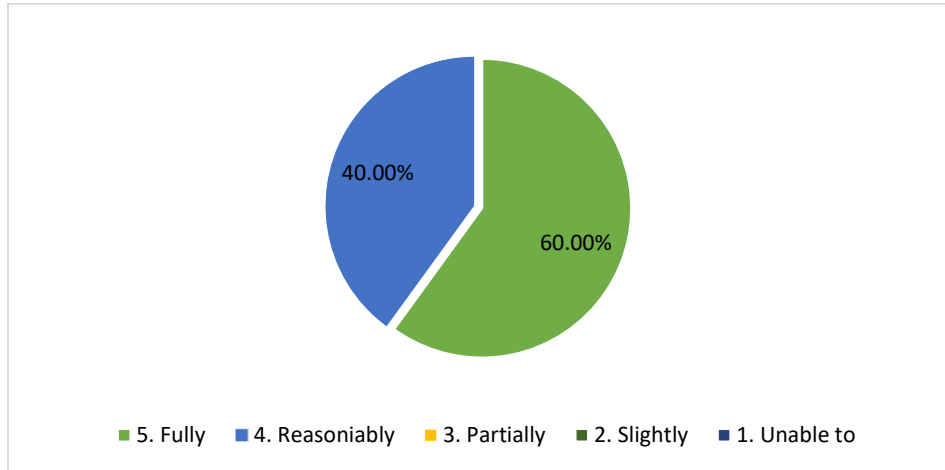
2. Teachers inform you about your expected competencies, course outcomes and programme outcomes.



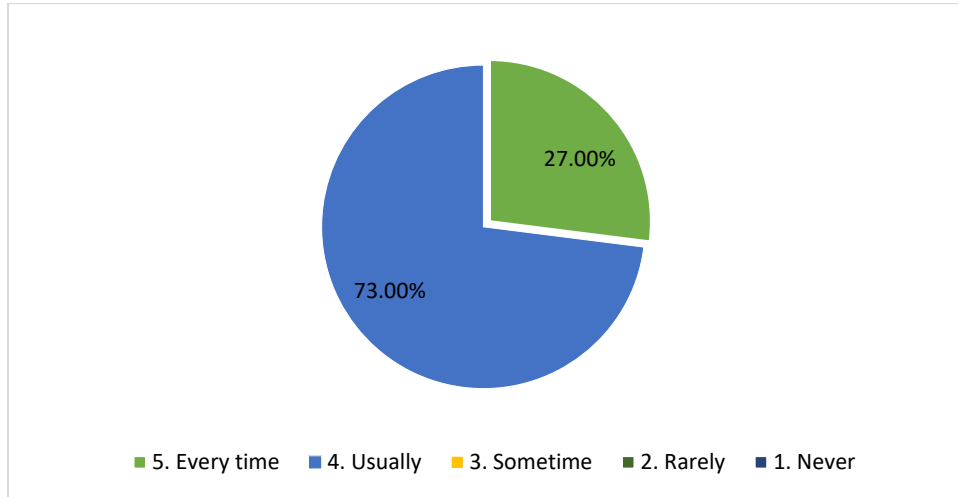
3. The teachers illustrate the concepts through examples and applications.



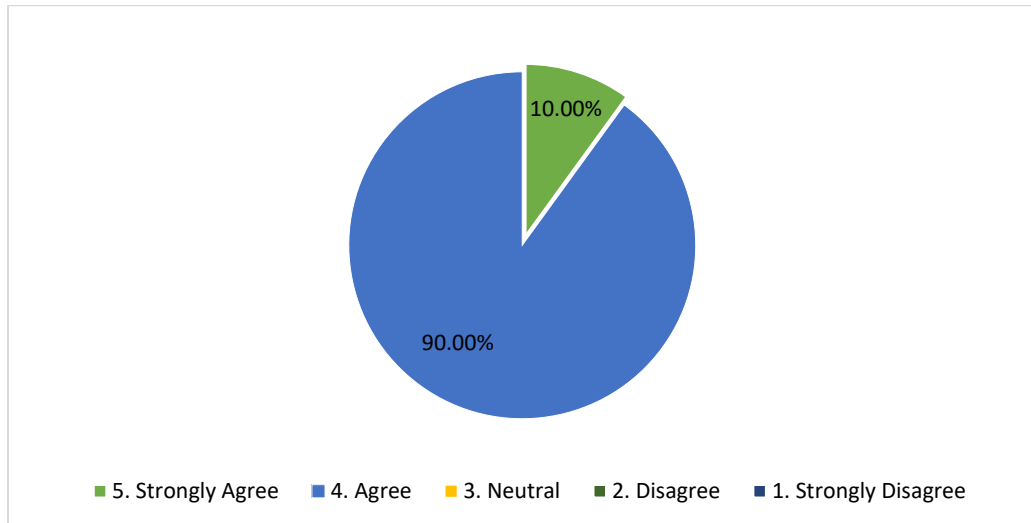
4. The teachers identify your strengths and encourage you with providing right level of challenges.



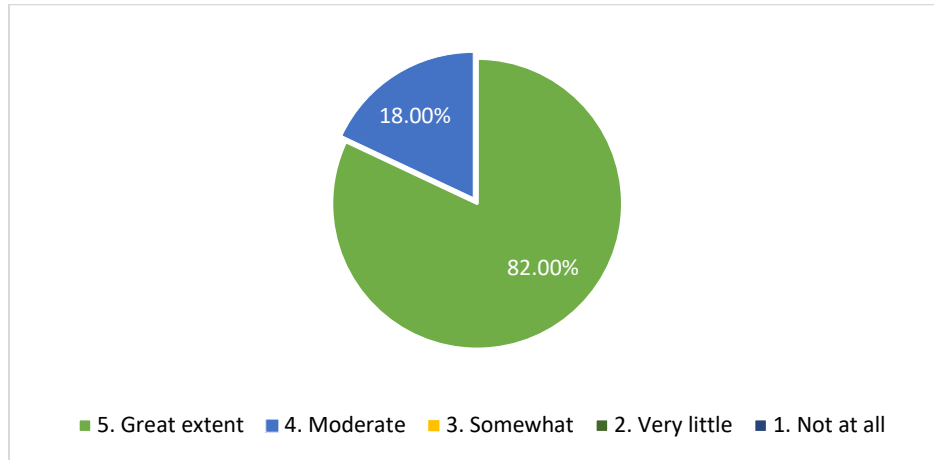
5. Teachers are able to identify your weakness and help you to overcome them.



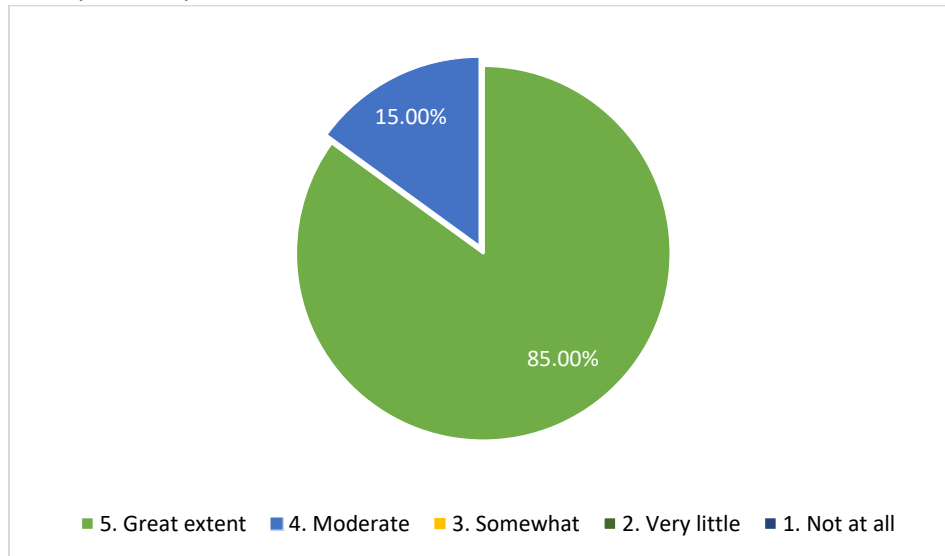
6. The institution makes effort to encourage students in the monitoring, review and continuous quality improvement of the teaching learning process.



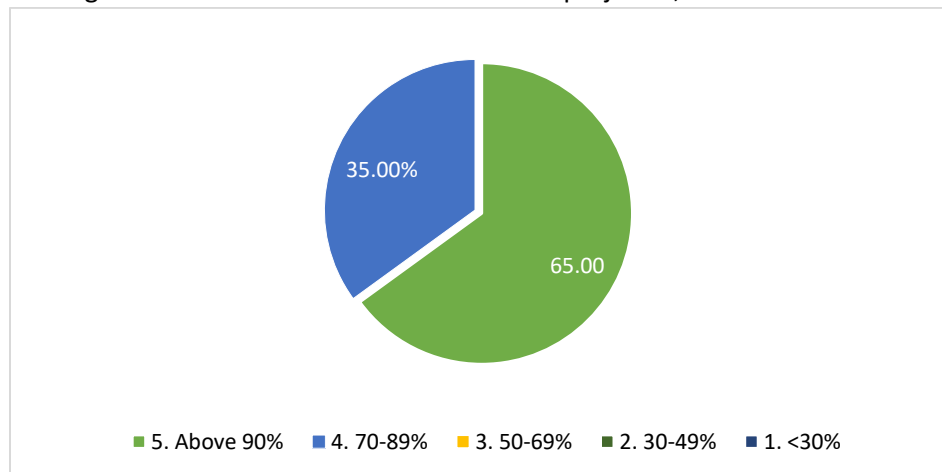
7. The institute/teachers use student centric methods, such as experiential learning, participative learning and problem solving methodologies for enhancing learning experience.



8. Efforts are made by the institutions/ teachers to inculcate soft skills, life skills and employability skills to make you ready for the world of work.



9. What percentage of teachers use ICT tools such as LCD projector, Multimedia etc while teaching.



10. The overall quality of teaching learning process in your institute is very good.

